



LONDON SCHOOL OF ECONOMICS  
**CHINESE SOCIETY**





## ORIENTATION CAMP

The Orientation Camp is the event that no freshers should miss.

It is a three-day, two-night camp at Pak Tam Chung, Sai Kung, starting the 7th of September this year. While you are away from home during these three days, you will have the chance to meet almost sixty new friends before you enter the new phase of your life at LSE.

Are you excited about the games that your friends at other universities have been enjoying lately? Now it is your turn!

We will also bring you a meal of scrumptious seafood following a city run in Sai Kung Town Centre.

Join us for an unforgettable experience and get to know your future schoolmates!

*"Each friend represents a world in us, a world possibly not born until they arrive, and it is only by this meeting that a new world is born."* – Anais Nin

*Gladys Choy, Internal Vice President*



## VARIETY SHOW

Every November, ten first-year members are elected to form a committee who will dedicate their full efforts, working tirelessly, to put together our Variety Show from scratch.

Being our flagship production, the Variety Show is the opportunity for us to showcase our culture, talents and the LSE spirit that makes us proud. Each year, our show attracts audience from most major universities across the UK. Last year, we once again proved our exceptional level of team spirit and creativity with the success of "The Quinary", a play set around the first and only Chinese empress Wu Zetian.

If you are looking for ways to enrich your life at university, we strongly encourage you to take part in this production.

For those who missed out on last year's show, watch out for our "The Quinary Appreciation Night" this coming October.

*Lewina Liu, Director of Production*



## ONE. CAMPAIGN

The one. Campaign is a charity project led by a sub-committee within the Chinese Society. There are two main aims to this campaign: to raise funds, and more importantly, to raise awareness for the cause we are supporting.

Every year, we select a charity to which our funds are donated. Last year, we chose the SPCA (Society for the Prevention of Cruelty to Animals). Our funds come from a good variety of events, including charity sales and talent shows.

Being a cultural society, we also try to bring out our culture in some of our events. For example, an imitation of the traditional Hong Kong-style café and bakery (Cha chaan teng) was set up in the LSE campus during the International Week. We aim to further promote our traditions by organising our events around important festivals such as the Chinese New Year.

In the upcoming year, we are looking to break new grounds with even more creative events from our next team of members.

*Cindy Cheng, Director of Welfare*



## SPORTS & LEISURE

Sports have always been one of the most important aspects of the LSE Chinese Society. Every year, our members attend numerous renowned sports events, the most popular being the Nottingham Games.

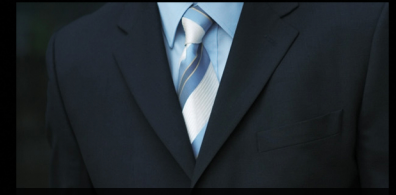
The Nottingham Games is held annually in late October. It consists of competitions in football, basketball, badminton and volleyball. The LSE teams are proud to have won a number of victories in the past years. Most notably, our basketball team became the champion in 2010 thanks to their hard work during the intensive trainings and the unflinching support from the cheering crowd.

This year, we are expanding our range of sports activities, starting with our first ever rugby tournament — the LSE Invitation Cup 2011.

The LSE Chinese Society also offers a good diversity of leisure activities tailored to your varied interests. These include shopping trips to Bicester Village, ice-skating nights and termly dinner gatherings. We are always open to suggestions of new categories of events and destinations, and your contribution will be much appreciated.

We look forward to seeing you all at the Nottingham Games and the Manchester Rugby Tournament!

*Tim Cheung, Director of Sports and Leisure*



## CAREERS EVENTS

As part of our commitment to create opportunities for our members to reach their aspirations, every year we make great efforts to come up with a selection of careers events that we hope our members will find rewarding.

Have you ever had any queries about your future career pathway in Hong Kong? How well do you know about Hong Kong's financial industry? Do you know what the employers are looking for? We invite you to the AIA Financial Planning Career Day on Sunday, 28 August, 2011. Speakers from AIA and VTC will be giving a talk on financial planning and future career options, including an introduction to relevant internship opportunities at AIA. On top of presentations, there will also be workshops on group interview and communication skills.

Thinking more ahead? We recommend our Investment Banking Workshop, to be held in Mid-September. Arch Academy will be guiding you through their résumé writing and mock interview sessions, so that you will be better equipped for the intense internship application process in the not-so-distant future.

Stay tuned at our Facebook Page at [lsecs.com/facebook](http://lsecs.com/facebook) for more careers events throughout the year!

*Gary Chan, Director of Corporate Relations*



*The London School of Economics Chinese Society aims to integrate and promote the cultural identity of the Chinese community within LSE. Having one of the largest membership bases within the LSE Students' Union, we hope to provide a warm and welcoming environment for all Chinese students entering the School. We continue to expand our influence beyond the academic sphere, by devoting ever greater attention to social, careers and even charitable events. In doing so, we expect to create a diversity of opportunities for our members to reach their aspirations.*

## KEY CONTACTS

---

### PRESIDENT

**Keith Cheung**

(+852)96161678 / (+44)07859228250

t.k.cheung@lse.ac.uk

### INTERNAL VICE PRESIDENT

**Gladys Choy**

(+852)98024463 / (+44)07767726916

g.s.choy@lse.ac.uk

### EXTERNAL VICE PRESIDENT

**Catherine Hui**

(+852)92478478 / (+44)07887488504

k.m.hui@lse.ac.uk